

Miyajima Ropeway

Enter an extraordinary world where the sky and sea merge into one.



Funicular type ropeway

A great panorama of the Seto Inland Sea spreading out below!



Let's go to Mt. Misen, the miracle space, by "Miyajima Ropeway" You can enjoy two kinds of gondolas!

The Miyajima Ropeway operates two types of aerial rope systems, circulating and funicular in series, which is rare and unique in Japan. As if walking in the sky, you can enjoy the glorious views of the Seto Inland Sea and the primeval forest of Miyajima.

Access to the Miyajima Ropeway from the City of Hiroshima



*Parking is limited to near Momijidani station (next to the port). Visitors are encouraged to come by public transport.

Located in front of Miyajima Pier

Miyajima Ropeway Information Center

In addition to ropeway operation information and ticket sales, we also have general information about Miyajima and some souvenirs. When you arrive at Miyajima, please stop by!

English-speaking staff available

[Business hours] 9:00-12:00, 13:00-17:30
*12:00-13:00 is break time

[Business content] Ropeway ticket sales
Island tourism information
Goods/souvenir sales



A bird's-eye-view of Miyajima



Highest peak in Miyajima 535 meters above sea level holy mountain "Mt. Misen"

Since it was founded by Kobo Daishi (Kukai) in 806, it has attracted devoted worshippers including Taira-no-Kiyomori and Ito Hirobumi, there are still traces of their travels and legends here. The natural environment has been kept intact which creates magnificent scenery. Among the natural beauty, there are scattered strange rocks in addition to a variety of historical sites. In 1996, it was designated a World Cultural Heritage site as "Misen Virgin Forest together with Itsukushimajinja Shrine"

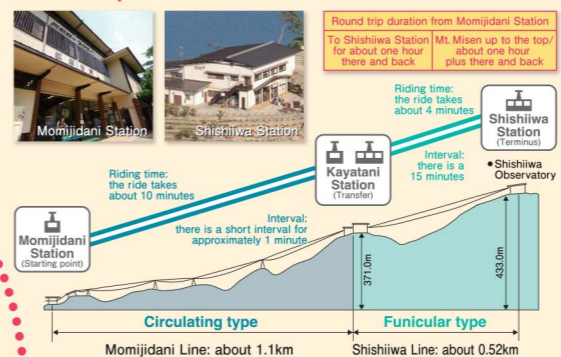
Kobo Daishi, the founder of the Shingon Sect who founded a temple on Mt. Misen.

Kukai visited Miyajima on his way back to the city of Kyoto after finishing the mission of envoys. It is said that he performed "Gumonji" meditative practice for 100 days burning "Goma-gi" (a Goma fire ceremony). The flame used at this time has been protected even today from extinguishing for over 1,200 years as "The Eternal Flame."



The statue of Kobo Daishi, photo offered by Gashoin Temple.

Time Required · A Cross-section of the Routes



Come and visit Miyajima Ropeway Shishiwa Station!

See, experience and take pictures of the permanent exhibition of trompe l'oeil artwork!

For almost 400 years, since the early Edo period, a Great Tengu and a Crow-billed Tengu have been in front of what is now Reika-do. Pull on the nose of the Tengu and listen to their story!

Satellite of Lovers Sanctuary Light the "Fire of Oath" with the one you love

Come and light the "Fire of Oath" together with the one you love at the monument at Miyajima Ropeway Shishiwa Station (summit station), whether that person is your partner, spouse, parent, child, or close friend.



Do not bring your pet.

Please be aware in advance that pets are not allowed in this facility. However, seeing-eye dogs, assistance dogs, and other types of service dogs may use the facility together with the person they are aiding.

Use of strollers, wheelchairs, etc.

This facility does not have elevators, or similar conveyances and strollers, wheelchairs, and other vehicles cannot board the Circular Ropeway. Please be aware in advance that we ask that you leave your stroller, wheelchair, or similar items with the Momijidani Station Office.

Be sure to reserve during busy times!

See our website to check the days when online reservation is required.



A Guide to Miyajima Ropeway

The circulating type ropeway Momijidani Line (Momijidani-Kayatani)

The system operates a number of gondolas for a small number of passengers at fixed intervals. This system is suited for long-distance transport. The Momijidani line a 8-seater gondola carriers (max. 22 units) at about 1-minute intervals.

The funicular type ropeway Shishiwa Line (Kayatani-Shishiwa)

The system operates two large carriers alternately between the mountainside and summit. It is suited for high-speed transport. The Shishiwa line runs a 35-seater gondola carriers at 15-minute intervals (shorter intervals during busy hours).

Ropeway Fares and Hours of Operation

Classification	Round trip		One way	
	Ordinary rate	Adult	¥2,000	Child
Group rate Silver discount rate	Adult	¥1,800	Child	¥500
	Adult	¥1,000	Child	¥500

- Adult: 12years old and over. (junior-high school students and older)
- Child: 6-11years old. (elementary school students)
- Children not yet in elementary school are free of charge with an adult (1 child per adult). The child fare applies from the 2nd child.
- Group rates are available for parties of 15 and over.
- Seniors aged 65 and over are eligible for a silver discount rate. (age confirmation required)
- Discounts are available for those who have a physical disability certificate, rehabilitation certificate, or mental disability certificate. Please present your notebook or Miraio ID (linked to Mynaportable).

Seasonal adjustment	1-12	Business hours are subject to change. Please access the Miyajima Ropeway website for further information.
Operating hours	9:00~16:00	
Final return departure	16:30	

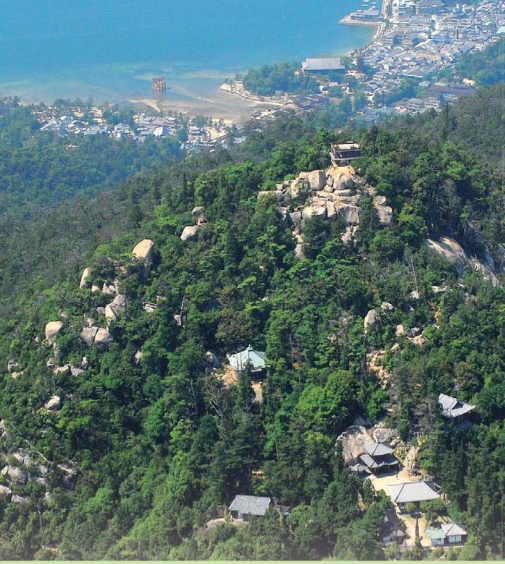
It may be canceled due to bad weather such as strong winds and thunder. In addition, there is a suspension period for regular inspection and maintenance in February and July.

For further information:

Miyajima Ropeway
URL <http://miyajima-ropeway.info/>
Momijidani Park, Miyajima-cho, Hatsukaichi-shi, Hiroshima-ken 739-0522
TEL(0829)44-0316

Miyajima Mt. Misen summit. Map

Miyajima, Mt. Misen, the Celestial Site. A number of miracle spots beyond Itsukushimajinja Shrine.



Misen's Seven wonders

- I Kiezu-no-hi (The eternal flame)**
A spiritual eternal-flame has been kept burning for about 1200 years since Kobo Daishi lit it as a part of his spiritual training.
- II Kanman-iwa rock (Ebb-and-flow rock)**
This strange hollow rock's water level changes according to the come and go of the tide.
- III Shakujo-no-ume (Plum of crozier)**
The crozier that Kobo Daishi rested in is said to have made roots and changed into a big Japanese Ume apricot tree. The flower never blooms if there is an ominous sign in legend.
- IV Mandara-iwa rock***
The gigantic handwriting of Kobo Daishi engraved on a bedrock face equivalent in size to a couple dozen tatami mats.
- V Sound of wooden clappers**
A mysterious sound of clappers comes from the midnight darkness. Some say Tengu (a long-nosed goblin) does it.
- VI Shigure-zakura (Showered cherry blossom!)**
On a fine day, this cherry tree alone remains wet-seemingly caught in a rain.
- VII Ryuto-no-sugi (Sea-fire Japan cedar!)**
The great cedar from which mysterious lights on the sea can be seen these lights appear off the coast of Miyajima and are seen most clearly on the night of the Lunar New Year.

Things with asterisks(*) may not be accessible today due to dangerous conditions or tree trimming. 2026.4

Some miracle spots around the Mt. Misen Summit!

A lot of historical and natural spots around the Mt. Misen Summit! You will also find many things connected with big figures. More enjoyable and interesting if you make research on them!



"View from the Ropeway"
Feeling Like a Flightseeing
You can enjoy marvelous views as if you walk in the sky. The air walk is another attraction of the Misen tour.

B] [The 2nd floor of Shishiwa Station Satellite of Lover's sanctuary]

Fire of Oath

A monument to convey your feelings. "Fire of Oath." If two people who face each other and press the button are in sync, the light will turn on. Please come and light the "fire of oath" with your partner, spouse, parent and child, close friends, and other important people.

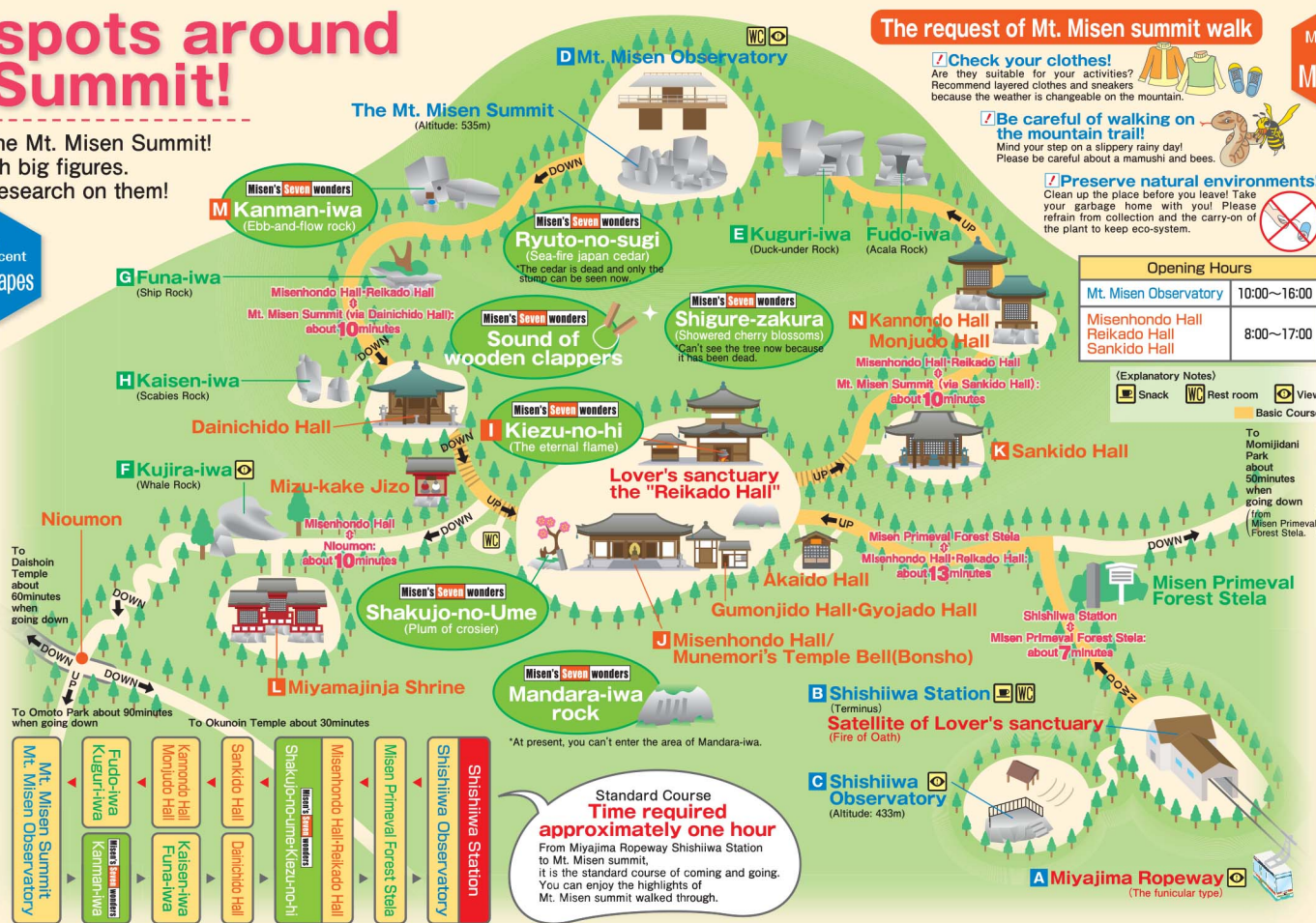
"Shishiwa Observatory"

Great viewpoint of the Setouchi(Seto Inland Sea)dotted islands
There is an observatory near Shishiwa Station. That is a great viewpoint area of the Setouchi dotted islands.

The view from the summit of Mt. Misen represents the genuine value of Miyajima, one of the three most scenic spots of Japan.

"Mt. Misen Observatory"
A great panorama of 360° without obstructions

On a fine, clear day, this point commands views as far off as the Shikoku Mountain Ranges and the dotted island of Seto Inland Sea.



Wonder of Nature

E Strange rock "Kuguri-iwa(Duck-under Rock)"
A strange scene staged by gigantic rocks
A spontaneous arch made of gigantic rocks near the Misen Observatory. It dazzles viewers by its overwhelmingly dynamic scale.

Marvelous views created by nature from time immemorial

F Strange rock "Kujira-iwa (Whale Rock)"
A whale on the mountaintop? A rock shaped like a whale comes into sight abruptly on your way to the summit. It has a spouting hole on the top.

Strange rock "Funa-iwa(Ship Rock)"
Large Rock Ship!
Big rock to have shape of boat with "Kanmaniwa" below soon. Under the rocks, guardian deity of children are enshrined.

H Strange rock "Kaisen-iwa (Scabies Rock)"
Marvelous effect on patients!? Mysterious Rock!
It is said that an imprudent person catches a skin disease when he passes the rock, and that the scabies patient is cured when he touches the rock because it takes his disease off.

The request of Mt. Misen summit walk

- 1 Check your clothes!**
Are they suitable for your activities? Recommend layered clothes and sneakers because the weather is changeable on the mountain.
- 2 Be careful of walking on the mountain trail!**
Mind your step on a slippery rainy day! Please be careful about a mamushi and bees.
- 3 Preserve natural environments!**
Clean up the place before you leave! Take your garbage home with you! Please refrain from collection and the carry-on of the plant to keep eco-system.

Miyajima's Living Miracles

I Kiezu-no-hi(The eternal flame)"
The miracle of the eternal flame-it has been burning for 1200 years.
The holy fire which Kobo Daishi used as part of his religious training is burning even now after about 1200 years in Reikado Hall. It is said that the holy water boiled by this fire works for all sorts of disease. It was also used as the pilot light for the "Flame of Peace" of Hiroshima Peace Memorial park.

II "Misenhondo Hall"
Hall that built on the place of Kobo Daishi (Kukai) training
It is said that Kobo Daishi founded the temple and performed the "Gumonji", a secret Buddhist practice for 100 days when he stopped over at Miyajima for looking for a sacred place on his way from Tang. The main deity is Akasagarbha (Kokuzo-Bosatsu) accompanied by Acala and Vaisravana enshrined on both sides.

III "Munemori's Temple Bell (Bonsho)"
Designated as Cultural Asset of National Importance
Casted at furnace in Miyajima!
It is said that "Bonsho" was donated from Taira-no-Munemori, the third son of Taira-no-Kiyomori. Figurations of a bell striking point and a dragon head decoration show the characteristics of the Heian Period in Japan.

IV "Sankido Hall"
For household welfare and business prosperity
Japan's only temple that worships ogres. Your prayers for household welfare and business prosperity will be answered.

V "Miyamajinja Shrine"
Exactly a sky shrine!
Three red shrines as well as the Itsukushima Shrine are dedicated the same God.

VI "Kanman-iwa(Ebb-and-flow rock)"
Mysterious ebb and flow appearing on a mountaintop
The hollow of this strange rock sitting 500 meters above the sea is said to change its water level according to the come and go of the tide. It is one of the seven wonders of Misen.

VII "Kannondo Hall-Monjudo Hall"
An easy delivery / studies have divine favor!

Mysterious Mt. Misen still preserves magical legends.

VI "Miyamajinja Shrine"
An easy delivery / studies have divine favor!

VII "Kannondo Hall-Monjudo Hall"
An easy delivery / studies have divine favor!